

APPLICANT

# KEY OPERATING COMPANY

## Starks Field

CALCASIEU PARISH, LOUISIANA

## HACKBERRY ZONE, RESERVOIR L

Docket No. 17-584

November 28, 2017

Witness: Bryan S. Groves

prepared by

**BRYAN GROVES**

**OIL & GAS GEOLOGIST**

UNITIZATION / 3-D INTERPRETATION

[www.bryangrovesgeology.com](http://www.bryangrovesgeology.com)

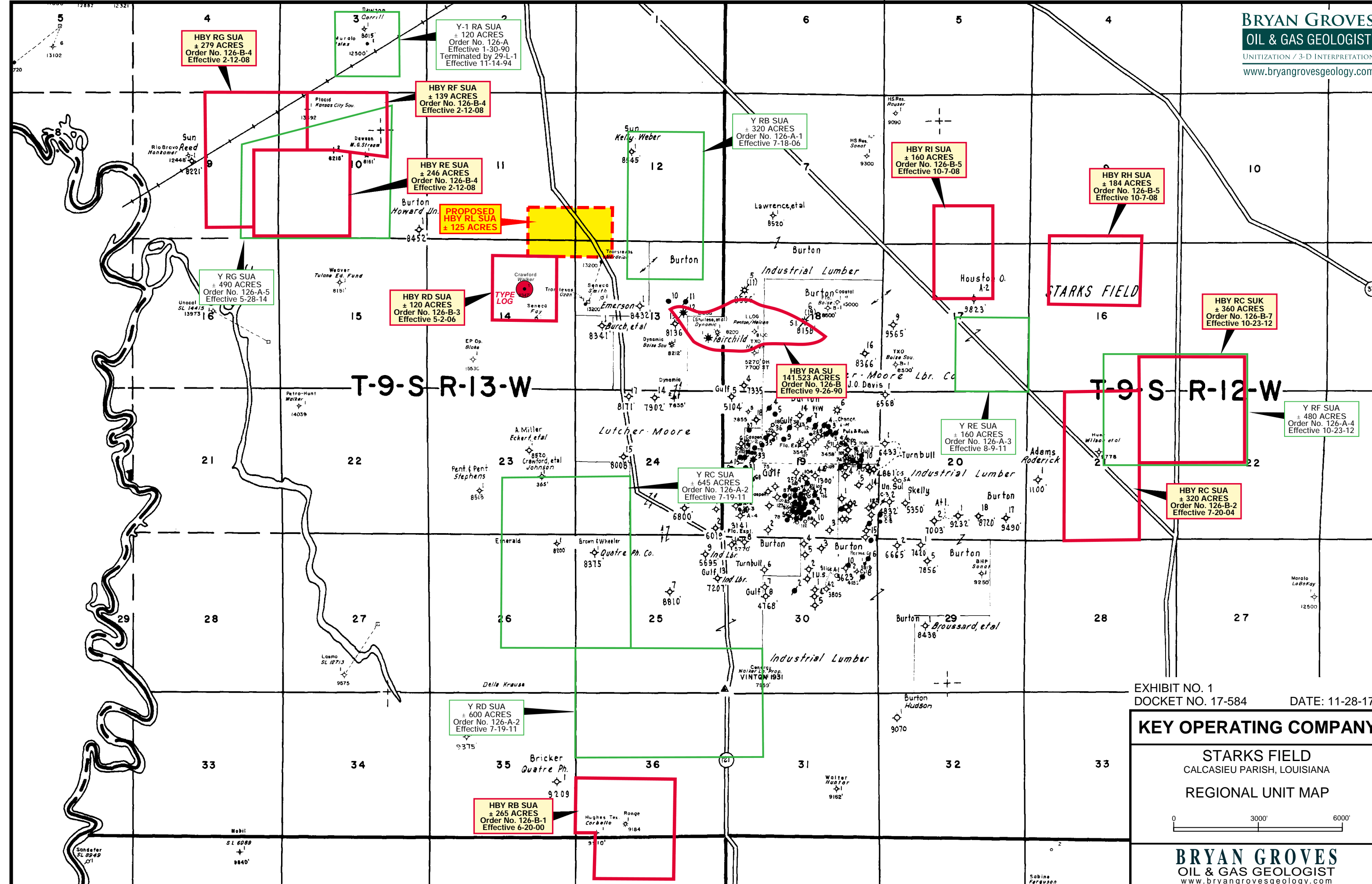
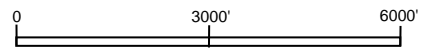


EXHIBIT NO. 1  
 DOCKET NO. 17-584  
 DATE: 11-28-17

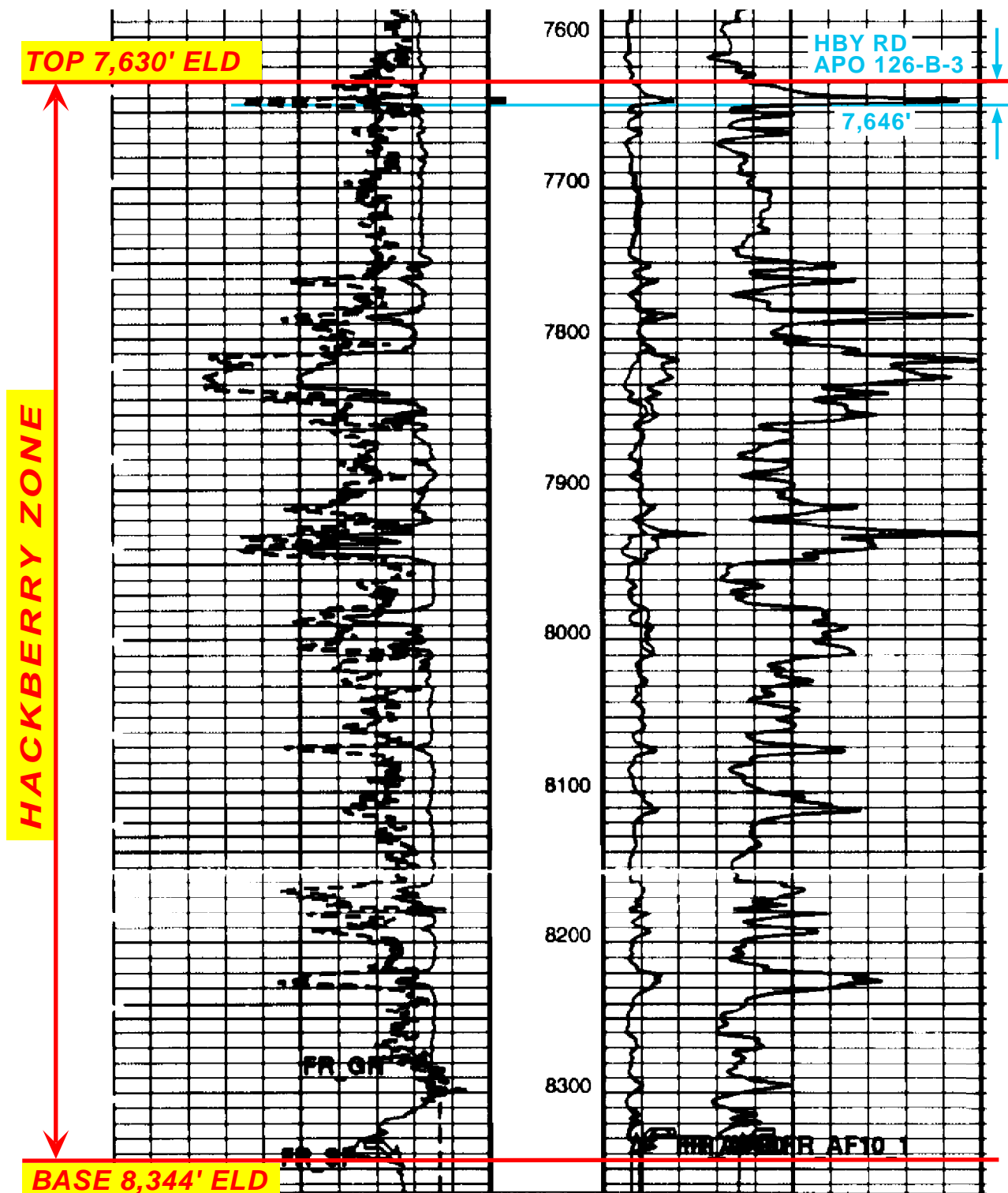
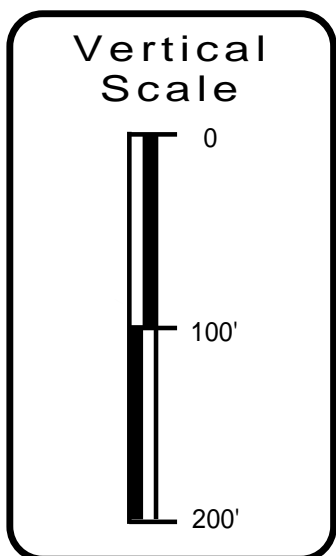
**KEY OPERATING COMPANY**

**STARKS FIELD**  
 CALCASIEU PARISH, LOUISIANA  
 REGIONAL UNIT MAP



**ZONE DEFINITION LOG**  
**Hackberry Zone**  
**7,630-8,344 feet ELD**

**1" LOG**  
 Crawford Energy Operating Co.  
 Walker #1  
 Sec. 14, T9S, R13W  
 Serial No. 232151



Comp. 1-11-06  
 Perfs. 7640-45'  
 I.P. 192 BOPD + 174 MCFD  
 FTP 1305# on 9/64" Ck.  
 GOR 906:1, Gty. 42.2°

EXHIBIT NO. 2  
 DOCKET NO. 17-584      DATE: 11-28-17

**KEY OPERATING COMPANY**

STARKS FIELD  
 CALCASIEU PARISH, LOUISIANA

**ZONE DEFINITION LOG**  
**Hackberry Zone**

**BRYAN GROVES**  
 OIL & GAS GEOLOGIST  
 www.bryangrovesgeology.com

**BRYAN GROVES**

**OIL & GAS GEOLOGIST**

UNITIZATION / 3-D INTERPRETATION

www.bryangrovesgeology.com

R 13 W

Sun  
Kelly Weber Unit

1  
8545'

11

12

W. E. Walker

Thomas L. Monison, et ux  
Shelton W. Ashworth, et ux  
Gregory C. Stanley

**HBY RL SUA  
(UNDRILLED)  
± 110 ACRES**

Linda S. Duggan

Olympia Minerals Leasing, LLC

EOG  
Olympia Min.

1  
13610'

Stream Estate

Hwy 109  
First Baptist Church of Starks

Frederic L. & Jacqueline M. Harget

Lee M. Lake, et ux

Wm. K. Hickey, et al

Jeffery W. Trahan, Sr., et ux

Harold McGill, et al

Samuel Ray Johnson, et ux

Edward D. Frenzel, et al

Allen H. & Imogene Spears

Stream Family Limited Partnership

Steve A. & Rhonda Y. Richardson

Jason P. & Sherrie P. Martinez

Clark

Luke

Hanks

LaBove

Crawford Walker  
1  
8347'

William D. Blake

PBA Properties, LLC

Francis X. & Lynn W. Heifron

Gary M. & Annette C. Bordelon

Trans Texas Ozan  
Smit  
1  
13200'

McGann Ozan

13

Burton Emerson  
1  
8600'

Burton Lutchter-Moore  
10  
11649'

14

Billiot

Williams

Burton Burch  
1  
8341'

Lyons

Burton Lutchter-Moore  
3  
8136'

Blake

Quatre Parish

EXHIBIT NO. 3

DOCKET NO. 17-584

DATE: 11-28-17

E&P Oper.  
Blake

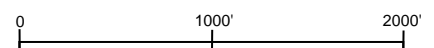
1  
15530'

**PLAT FILED WITH APPLICATION**

Adams

Bailey

William Poe



— AS PER ORDER 126-B-3  
NOTE: ALL BOUNDARIES ARE GEOGRAPHIC

**BRYAN GROVES**  
OIL & GAS GEOLOGIST  
www.bryangrovesgeology.com

**KEY OPERATING COMPANY**

STARKS FIELD  
CALCASIEU PARISH, LOUISIANA

PROPOSED UNIT  
HACKBERRY ZONE

# BRYAN GROVES

## OIL & GAS GEOLOGIST

UNITIZATION / 3-D INTERPRETATION

www.bryangrovesgeology.com

### R 13 W

Sun  
Kelly Weber Unit

⊙ 1  
8545'

11

12

W. E. Walker

Thomas L. Monison, et ux  
Shelton W. Ashworth, et ux  
Gregory C. Stanley

**HBV RL SUA (UNDRILLED)**  
± 125 ACRES

Linda S. Duggan

Olympia Minerals Leasing, LLC

EOG Olympia Min.  
⊙ 1  
13610'

Stream Estate

Hwy 109  
First Baptist Church of Starks

Frederic L. & Jacqueline M. Harget

Lee M. Lake, et ux

Wm. K. Hickey, et al

Jeffery W. Trahan, Sr., et ux

Harold McGill, et al

Pannal L. Sanders Est.

Samuel Johnson Sr. & Est.

Lake, et ux

Samuel Ray Johnson, et ux

Edward D. Frenzel, et al

Allen H. & Imogene Spears

Stream Family Limited Partnership

Steve A. & Rhonda Y. Richardson

Jason P. & Sherrie P. Martinez

Clark

Luke

Crawford Walker  
● 1  
8347'

Francis X. & Lynn W. Heifron

Gary M. & Annette C. Bordelon

Hanks

LaBove

Trans Texas Ozan

Smit  
● 1  
13200'

Burton Emerson  
⊙ 1  
8600'

Burton Lutchter-Moore  
● 10  
11649'

William D. Blake

PBA Properties, LLC

14

McGann

Ozan

Billiot

Williams

Burton Burch  
⊙ 1  
8341'

Lyons

Burton Lutchter-Moore  
⊙ 3  
8136'

Blake

Quatre Parish

EXHIBIT NO. 4

DOCKET NO. 17-584

DATE: 11-28-17

E&P Oper.  
Blake  
⊙ 1  
15530'

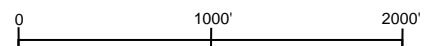
Adams

Bailey

### KEY OPERATING COMPANY

STARKS FIELD  
CALCASIEU PARISH, LOUISIANA

PROPOSED UNIT  
HACKBERRY ZONE



**BRYAN GROVES**  
OIL & GAS GEOLOGIST  
www.bryangrovesgeology.com

— AS PER ORDER 126-B-3  
NOTE: ALL BOUNDARIES ARE GEOGRAPHIC